



VENTOSAS

Suction Cups

SELECCIÓN DE VENTOSAS POR TIPOLOGÍA DE APLICACIÓN

Tipo de ventosa	EPDM	NBR	HNBR	SILICONA	SILICONA FDA	POLIURETANO	PTFE
VG.U 	LÁMINA METÁLICA, VIDRIO, PLÁSTICO	-	VIDRIO, PLÁSTICO, ANTI-MARCA	PLÁSTICO	CONTACTO ALIMENTARIO (FDA)	-	-
VG.B/SFO 	LÁMINA METÁLICA, VIDRIO, MADERA, PLÁSTICO, CARTÓN	-	VIDRIO, PLÁSTICO, ANTI-MARCA	CARTÓN	CONTACTO ALIMENTARIO (FDA) SUPERFICIES IRREGULARES Y POROSAS	-	-
VG.CF 	-	LÁMINA METÁLICA, MADERA, MÁRMOL	VIDRIO, PLÁSTICO, ANTI-MARCA	CARTÓN	-	-	-
VG.LB 	-	MADERA	LÁMINA METÁLICA - PLÁSTICO - ANTI-MARCA	-	CONTACTO ALIMENTARIO (FDA)	-	-
VG.FP 	-	-	-	APERTURA BOLSAS, PELÍCULAS FINAS/PAPEL	CONTACTO ALIMENTARIO (FDA) APERTURA BOLSAS, PELÍCULAS FINAS/PAPEL	-	-
VG.BC 	-	-	-	BOLSAS, FLOW PACK	-	-	-
VG.MB 	-	LÁMINA METÁLICA, VIDRIO, LÁMINA METÁLICA CON GRASA,	-	-	-	-	-
VG.PAAT 	-	-	-	-	-	-	PLÁSTICO, COMPUESTOS, FIBRAS
VG.GX 	-	-	-	-	-	VIDRIO, MADERA, CARTÓN, LÁMINA METÁLICA	-
VG.BP 	-	-	-	-	-	VIDRIO, MADERA, CARTÓN, LÁMINA METÁLICA	-
VG.IS 	-	-	-	-	-	SUPERFICIES IRREGULARES, SNACKS	-
VG.BR/LBR 	-	-	-	-	-	APERTURA BOLSAS, PELÍCULAS FINAS/PAPEL - BOLSAS, FLOW PACK	-
VG.MF 	-	-	-	-	-	LÁMINA METÁLICA CON GRASA	-
VG.FO 	-	-	-	-	CONTACTO ALIMENTARIO (FDA) APERTURA BOLSAS, FLOW PACK, PELÍCULAS FINAS/PAPEL	-	-

SELECCIÓN DE MATERIALES

Material	EPDM	NBR	HNBR	SILICONA/ SILICONA FDA	POLIURETANO
Desgaste	Discreta	Excelente	Excelente	Buena	Excelente
Aceites	Escasa	Excelente	Excelente	Escasa	Excelente
Agentes atmosféricos y ozono	Excelente	Escasa	Excelente	Excelente	Excelente
Hidrólisis	Buena	Buena	Buena	Discreta	Escasa
Petróleo	Escasa	Buena	Excelente	Escasa	Escasa
Ácidos-concentrados	Escasa	Escasa	Buena	Escasa	Escasa
Alcohol	Excelente	Buena	Buena	Buena	Buena
Oxidación	Excelente	Buena	Excelente	Excelente	Buena



Suction cups

SHEET METAL / GLASS / PLASTIC HANDLING APPLICATIONS



NEW

VG.MB | VG.MF

- Handling metal sheet with or without oil
- Glass panel handling
- High wear resistance
- Permanent fittings with hexagon

NBR · PU



NEW

VG.U | VG.B | VG.B.SFO | VG.LB | VG.LB.SFO | VG.CF

- Universal and plastic applications
- Suitable for standard application, flat and slightly curved surface
- Excellent grip stability, cleats increase the friction and avoid deformation

NBR · HNBR · Red Silicone · Transparent FDA Silicone

APPLICATIONS FOR PACKAGED AND UNPACKAGED PRODUCTS - SNACKS AND BAGS



VG.FP | VG.BC | VG.SBC

- Ideal for handling packaged flow pack products, packets of cookies and bars
- Robust bellows, soft flexible lip and specific high flow fittings

Red Silicone · Transparent FDA Silicone



VG.BPG | VG.LPG

- Ideal for handling difficult-to-handle items such as bags and flow packs
- The versions without internal insert are ideal for handling unwrapped products such as pralines or biscuits with porous and uneven surfaces

Transparent FDA Silicone



NEW

NEW

VG.BR | VG.LBR | VG.LBO

- Suitable for handling snacks and food bars packed in flowpack
- Ideal for gripping and depositing on the side of the handled object
- Handling of stand-up pouches (Doypack®) containing liquids

Polyurethane 50 Shore



VG.FO

- Ideal for opening bags, vertical and horizontal packaging machines
- Handle thin and sensitive sheets, such as paper and plastic films


Transparent FDA Silicone

WOOD AND POROUS SURFACE APPLICATIONS



VG.BP | VG.GX | VG.IS

- Excellent gripping performance on corrugated and porous surface
- Available with 2.5 and 1.5 bellows (overturn applications)
- Large and flexible lip in the version PUR 30/60 Shore grey/red

 PU 50 Shore green, PUR 30/60 Shore yellow/green, PUR 30/70 Shore yellow/green, PUR 30/60 Shore grey/red

HOT SURFACE AND POLYMER APPLICATIONS



VG.PAAT

- Ideal for objects (made of hot polymers and fibres) with flat or slightly curved surface
- Stainless steel nipple
- Suitable for high working temperatures up to 300 °C


 PTFE

APPLICATIONS FOR UNPACKAGED FOOD PRODUCTS



VG.U | VG.B | VG.FP | VG.LB | VG.BDT

- Suitable for high working temperatures
- Silicone compliant with FDA 21 CFR 177.2600 and regulation (EC) No. 1935/2004
- Detectable suction cups (blue colour): a small amount of metal additive (Fe) is added to the rubber
- Ideal for handling bakery products with seeds

 FDA Silicone · Detectable FDA-compliant silicone

Type of suction cup	Diameter (mm)
VG.U	6, 9, 11, 16, 22, 33, 42, 53
VG.B	6, 9, 11, 16, 22, 33, 42, 53, 77
VG.B.SFO	16, 22, 33, 42, 53
VG.CF	16, 22, 27, 33, 42, 53, 77, 112, 152
VG.LB	6, 9, 11, 16, 22, 33, 42, 53
VG.LB.SFO	16, 22, 33, 42, 53
VG.FP	15, 20, 30, 40
VG.BC	40, 50
VG.SBC	40, 50, 63
VG.MB	32, 42, 52, 63, 83, 103
VG.PAAT	16, 20, 30, 40

Type of suction cup	Diameter (mm)
VG.GX	10, 15, 20, 25, 35, 52, 75
VG.BP	10, 15, 20, 25, 35, 52, 75, 110, 150, 200
VG.IS	20, 25, 35, 45, 55, 70
VG.BR	20x45, 30x55
VG.LBR	20x45, 30x55
VG.LBO	40x90
VG.MF	20, 30, 45, 60, 80, 100, 120
VG.BPG	30, 41, 48, 55
VG.LPG	30, 41, 48
VG.FO	26, 33
VG.BDT	40



Vacuum pumps

VACUUM PUMPS FOR DECENTRALIZED AND CENTRALIZED APPLICATIONS



SMALL	MEDIUM	LARGE
0.18 ÷ 0.29 NI/s	0.57 ÷ 2.7 NI/s	2.6 ÷ 6 NI/s



EJ-BASIC

- Ideal for decentralized applications
- Possibility of integration close to the gripping point, low weight
- Available with two and three stages; EJ-MEDIUM and EJ-LARGE cartridges (EJ-LP, EJ-HF, EJ-HV)

EJ-LINE

- Ideal for pick & place applications
- Vacuum pump in-line
- Clampable in-line design, to optimize overall dimensions
- Low weight

EJ-SYS

- Manifold in aluminum, sensing and blow-off port
- Integrated silencer
- Available with two and three stage cartridges (EJ-LP, EJ-HF, EJ-HV)

EJ-MEDIUM · EJ-MEDIUMx2
EJ-LARGE with and without integrated silencer

EJ-SMALL · EJ-MEDIUM
(EJ-LP, EJ-HF, EJ-HV)

EJ-SMALL · EJ-MEDIUM with integrated silencer · EJ-LARGE with and without integrated silencer

VACUUM PUMPS WITH INTEGRATED BLOWOFF AND QUICK DEVICE



SMALL	MEDIUM	LARGE
0.58 NI/s	0.57 ÷ 1.56 NI/s	2.6 ÷ 6 NI/s



EJ-BLOWOFF

- Adjustable integrated blow-off tank
- Keeps the ejector clean and releases the handled product quickly
- Available with or without integrated vacuum switch

EJ-ATM-LINE

- Restores atmospheric pressure inside the gripper for quick product release
- A single 3/2 valve controls the vacuum pump and the ATM release

EJ-BSV-MEDIUM

- Ideal for applications in dusty environments
- Adjustable integrated blow-off tank
- Available with vacuum switch integrated
- Integrated silencer
- Anodised aluminium manifold

EJ-MEDIUM · EJ-MEDIUMx2
EJ-LARGE

EJ-SMALLx2 · EJ-MEDIUM with integrated atmospheric quick release valve

EJ-MEDIUM 2 stage (EJ-HF, EJ-HV) high suction flow rate and low energy consumption

LIGHTWEIGHT AND MODULAR VACUUM PUMPS



SMALL 0.18 ÷ 0.29 NI/s **MEDIUM** 0.57 ÷ 1.35 NI/s **LARGE** 2.6 ÷ 51.2 NI/s



EJ-SLG

- High suction flow rate/low weight
- Manifold in POM material
- Available with vacuum switch integrated
- Available with two and three stages; EJ-MEDIUM and EJ-LARGE cartridges (EJ-LP, EJ-HF, EJ-HV)



EJ-MLG

- Modular and configurable
- Manifold in POM
- Designed for centralized vacuum system
- Available with 2, 3 or 4 EJ-LARGE cartridges with two or three stages
- Sensing and blow-off connections



EJ-CEN-LARGE

- Ideal for centralized applications
- Modular and configurable from 5 to 16 two-stage EJ-LARGE cartridges (EJ-HF, EJ-HV)
- Compact size and high suction flow rate
- Robust design and low weight (aluminium body and PA12 silencer)
- Can work during suction or blowing (remove silencer)

EJ-MEDIUM · EJ-LARGE with integrated silencer

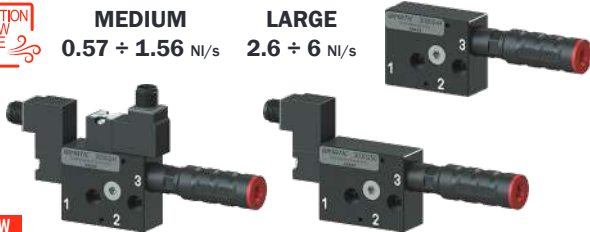
EJ-LARGE 2 or 3 stage

EJ-LARGE 2 stage

ISO VACUUM PUMP



MEDIUM 0.57 ÷ 1.56 NI/s **LARGE** 2.6 ÷ 6 NI/s

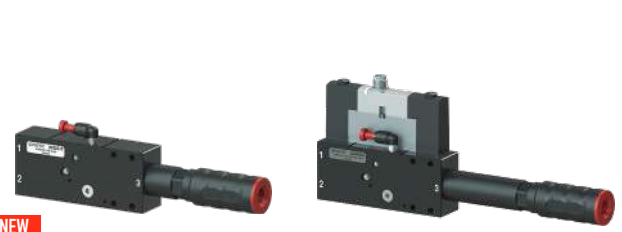


NEW

EJ-SVLG-MEDIUM-ISO | EJ-BSVLG-MEDIUM-ISO

- Ideal for decentralized applications
- Excellent ratio between suction flow rate and compressed air consumption
- Available with ON/OFF vacuum valve and integrated manual override control
- POM manifold prepared for mounting ISO 15218 (15 mm) valve of type 3/2, NO or NC, with 1.6 mm diameter opening
- Available with two- and three-stage EJ-MEDIUM cartridges (EJ-LP, EJ-HF, EJ-HV)
- Additional vacuum port for mounting a vacuum switch
- Size: EJ-MEDIUM 2 or 3 stage

EJ-MEDIUM 2 or 3 stage



NEW

EJ-BSVLG-LARGE-ISO

- Ideal for centralized and decentralized applications
- Excellent ratio between suction flow rate and compressed air consumption
- Available with ON/OFF vacuum valve, blow-off, and integrated manual override control
- POM manifold ready for mounting ISO 01 15407-1 3/2 x2 valve
- Available with two- and three-stage EJ-LARGE cartridges (EJ-HF, EJ-HV)
- In-line design for greater dirt tolerance
- Installable in series

EJ-LARGE 2 or 3 stage

VACUUM PUMP WITH INTEGRATED SMART FUNCTION



LARGE 2.6 ÷ 3.2 NI/s



EJ-XPRO

- Easy to install
- Powerful and reliable
- Simplified maintenance
- Compact dimensions
- Configurations complete with solenoid valves for vacuum generation (NC/NO) and blow-off
- Maximum vacuum level up to -95 kPa
- Suction flow rate up to 192 NI/min
- Integrated blow-off with manual adjustment

BOOSTER - HIGH VACUUM FLOW FOR POROUS SURFACE APPLICATIONS



EJ-BBT BOOSTER

- Ideal for applications where a high suction flow rate is required at low vacuum degrees
- Transport of waste scraps and residual dust

Ø 10, 20, 30 and 40 mm



Multistage cartridges

MULTISTAGE EJECTORS FOR CUSTOM INTEGRATION



EJ-SMALL/MEDIUM/LARGE for custom integration solutions

- EJ-HF: high vacuum flow; max vacuum level: -73 kPa
- EJ-HV: extra vacuum level; max vacuum level: -94 kPa
- EJ-LP: low feed pressure; max vacuum level: -90 kPa



System accessories

VACUUM SWITCHES



VACUUM SWITCHES

- Adjustable electromechanical and pneumatic vacuum switches
- G1/8" and Push-in 6mm; PNP/NPN; pre-set: -30, -50, -70 kPa
- Connection M8x1 3-pin



Vacuum gripping systems

VACUUM GRIPPING SYSTEMS WITH FOAM



NEW

FGS-060 | FGS-120

- Available in different sizes to meet the requirements of many applications
- Modular and versatile solution, available with calibrated holes and self-closing valves
- Typical applications: palletization and handling in the packaging, sheet metal, glass and wood industries

VACUUM GRIPPING SYSTEMS WITH SUCTION CUPS



NEW

FGS-120-SC

- Available in different sizes to meet the requirements of many applications
- The VG.IS polyurethane suction cups ensure high wear resistance and adaptability to uneven surfaces
- Typical applications: palletization and handling in the packaging, sheet metal, glass and wood industries

VACUUM GRIPPING SYSTEMS WITH FOAM



NEW

FCG

- Ideal mainly for palletising cardboard boxes, interlayers and pallets
- Power&light version with light carbon body and high suction flow rate

